

TS 62/108

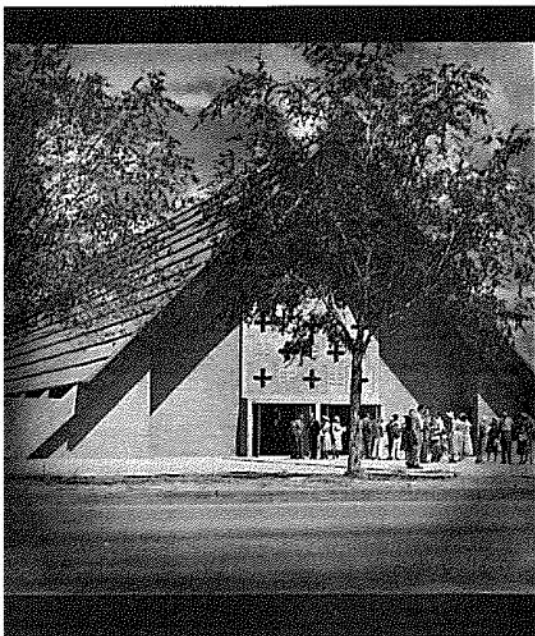
NOTES

U. S. NAVAL ORDNANCE TEST STATION CHINA LAKE, CALIFORNIA

Living at

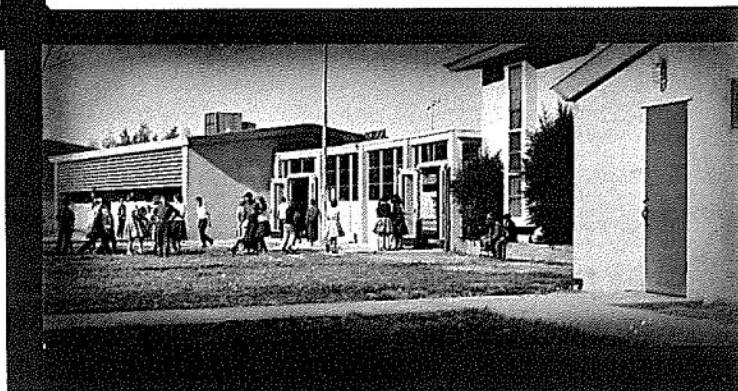


Looking west over China Lake
toward the Sierra Nevada.

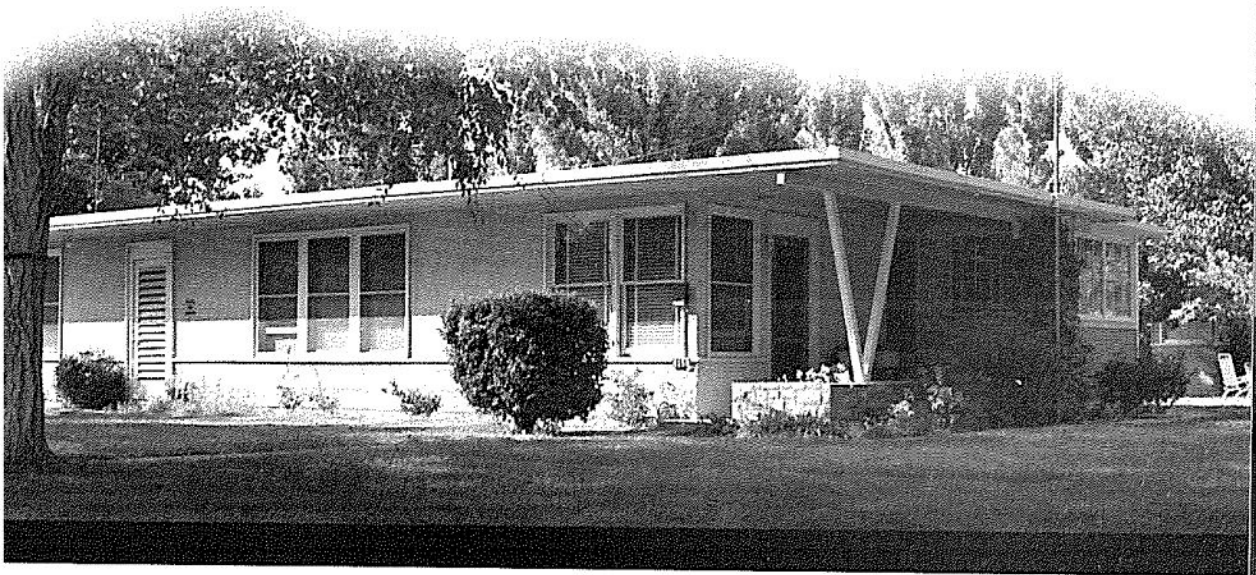


This beautiful chapel
is a place of worship for all
faiths at China Lake. In nearby
Ridgecrest, churches of
the major denominations
also welcome Station residents.

The public-school system
extends from kindergarten
through high school. For small
children whose mothers wish to
work, the China Lake day
nursery provides professional
care at reasonable cost.



introduction



Comfortable, air-conditioned home on tree-shaded street is typical of China Lake residences.

You will be at home at China Lake. In this California Community built by the Navy for the civilian and military personnel of the U. S. Naval Ordnance Test Station (NOTS), you will find that your needs for comfortable living, stimulating work, and satisfying leisure activities have been anticipated.

China Lake, located in a high valley of the Mojave Desert 150 miles north of Los Angeles, has a population of about 12,000. Approximately 4,500 of these are civilian employees of NOTS, and most of them are married.

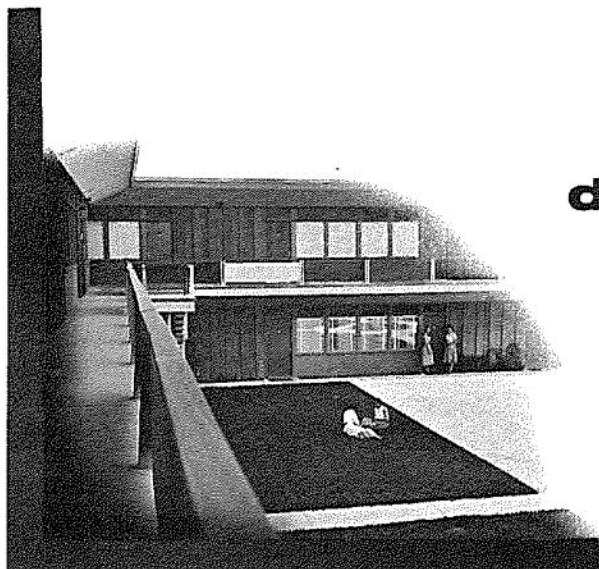
This booklet gives information about the housing that is available for Junior Professionals immediately upon arrival at NOTS or shortly thereafter: dormitories for single persons, and, for those who are married, three types of family quarters, presented in order of availability and increasing amount of rent. The China Lake housing office will help you to find the size and type of housing to meet your needs.

All quarters are unfurnished except the dormitories; all have evaporative coolers. Family housing is equipped with ranges, refrigerators, and steam or gas heating units. Privately owned ranges or refrigerators may be used if desired. Most houses are equipped for automatic washer installation, and some for dryers; however, laundromats are conveniently located on the Station for those who do not have washers.

Rent includes shelter, utilities, and refuse collection. Adequate police and fire protection is provided at no additional charge. Pets are allowed in all quarters except the dormitories.

TV reception is excellent; a repeater station, built by NOTS engineers, beams seven Los Angeles channels to the valley. Reception of FM stations is also good.

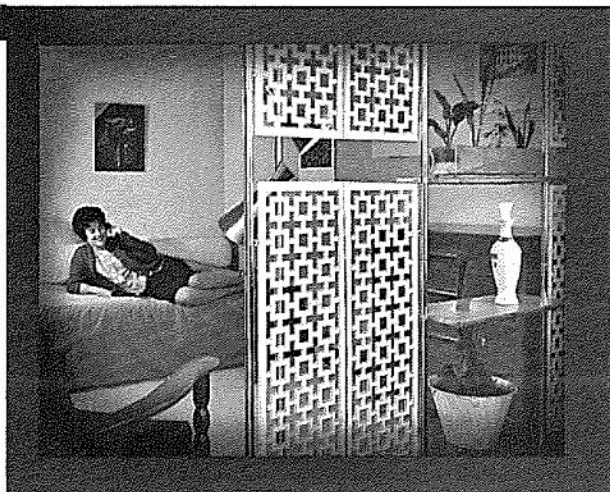
NOTS invites you, a Junior Professional embarking upon a career in science or engineering, to consider the opportunities available for you at China Lake, and to consider them against the background of a modern, growing community and the well planned, attractive homes that are shown on the following pages.



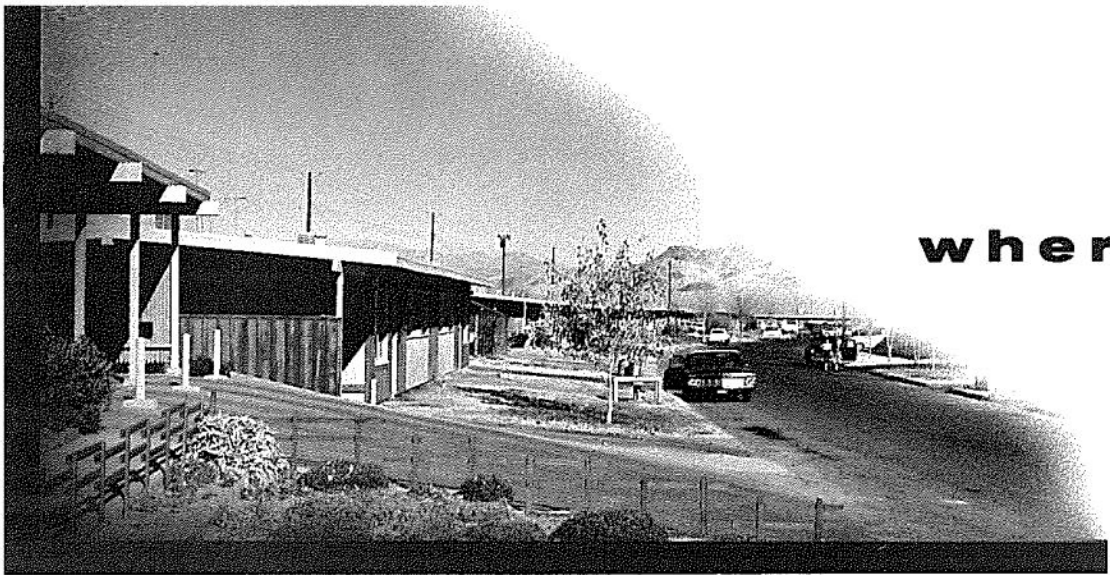
dormitories

Attractive dormitories for single employees are located close to the shopping center and restaurant.

Dormitory rooms are comfortably furnished.



Large, double-deck dormitories with an outside entrance to each room afford ample, furnished quarters for single persons. Two rooms in each dorm have private baths; the rest have a bath with stall shower between each two rooms. Rooms with private bath rent for \$37.50 per month, and rooms with shared bathrooms are \$34.50. Rent includes utilities, bedding, and laundering of bedding.



wherry

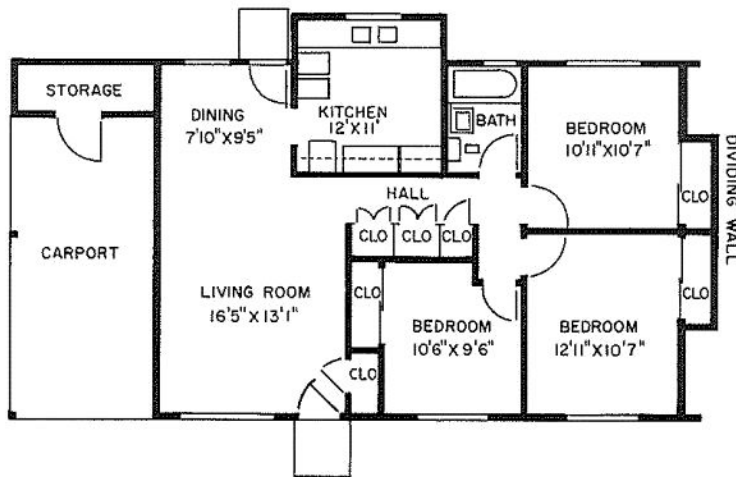
Wherry homes are located in an attractive neighborhood with adequate lawn and play areas for children.

For a married couple, or a couple with one child, two-bedroom Wherry houses are available. For larger families, there are three-bedroom homes of this type. These homes are built duplex style, with two units per structure, and each unit has a carport. Gas is used for cooking and heating.

The two-bedroom Wherry homes first built rent for \$71.40 per month, and the newer structures for \$72.60. Three-bedroom units rent for \$81.60 and \$82.80 per month.

These homes are located in Desert Park, a pleasant residential area near the main shopping center of Ridgecrest. An elementary school and the high school are nearby, and bus service is provided to the junior high school.

housing

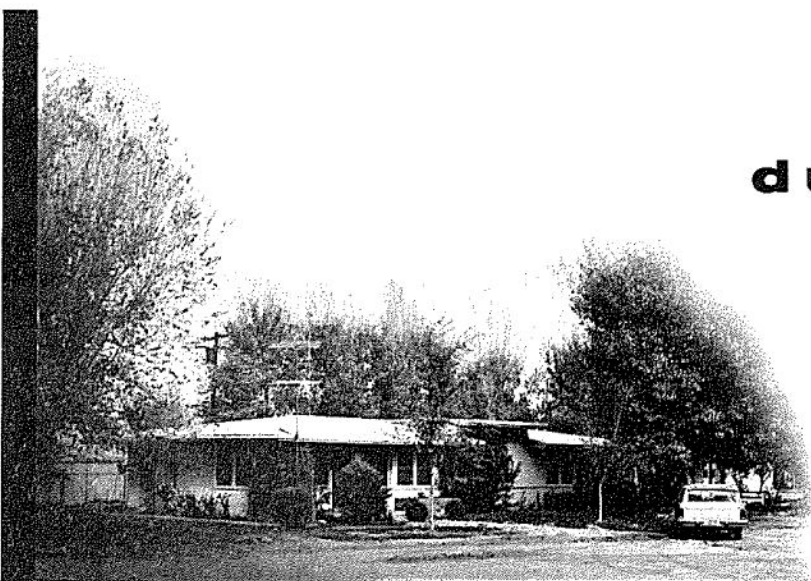


Floor plan of three-bedroom Wherry house.



Well planned Wherry houses have large living and dining area and ample storage space.

duplexes

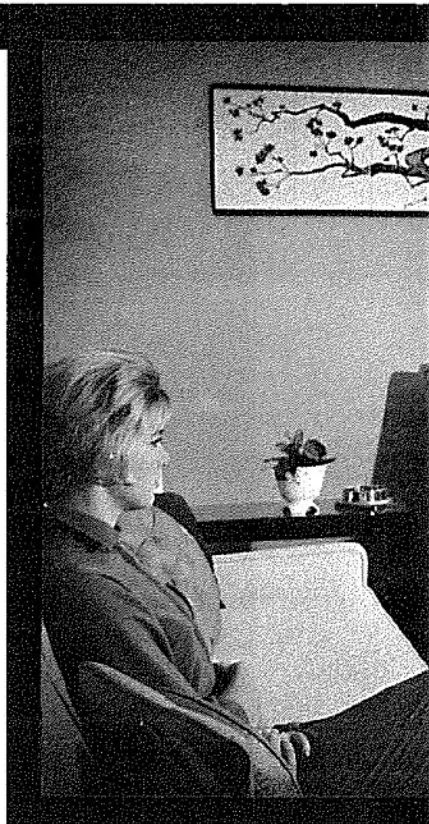


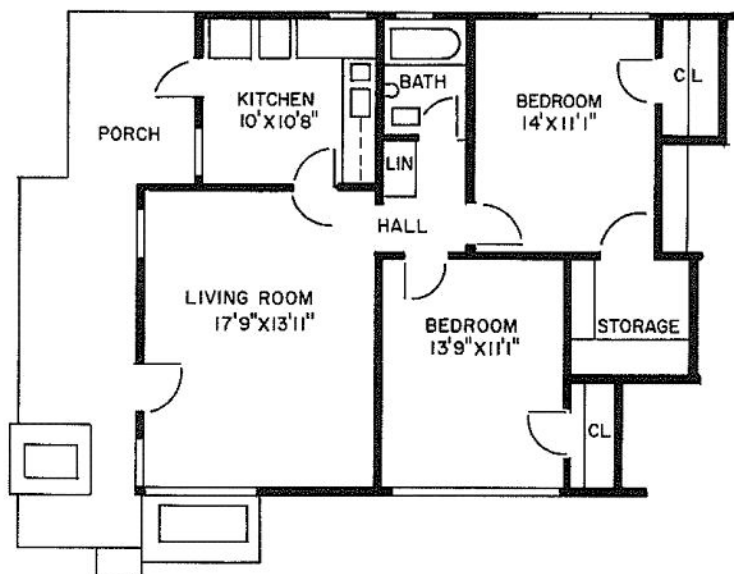
Well established lawns, shrubs, and flowers add to the attractiveness of Duplex homes.

Well planned Duplex units are among the most desirable homes on the Station and are available in several floor plans. Two-bedroom Duplexes accommodate families of two or three members. In some homes of this type, a large back porch has been converted to a dining room, a den, or an extra bedroom. In such cases, these homes are available for families having four or five members.

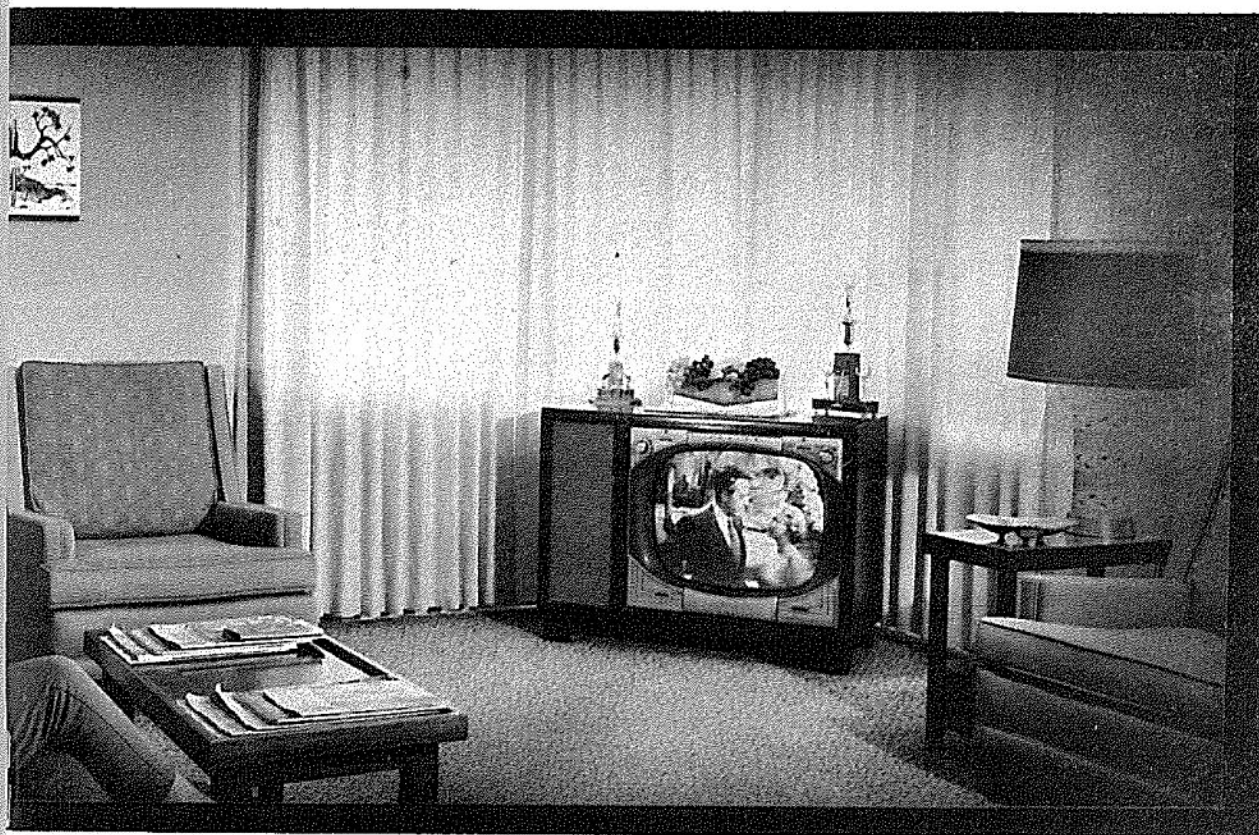
Most of the Duplexes have electric ranges and steam heat, although in some the change has been made to gas for heating.

Rent for the Duplex units with gas heat is \$73.50 per month, and for those with steam heat, it is \$76.20.



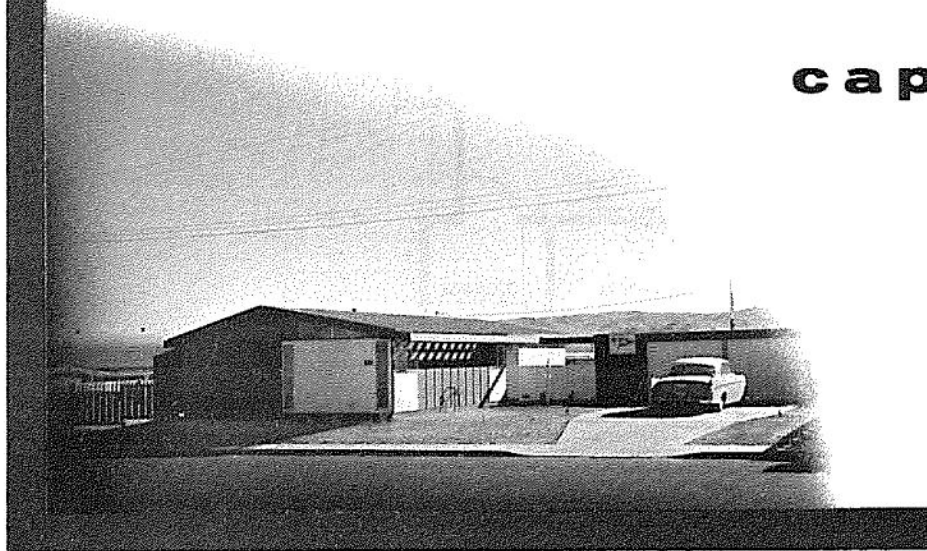


Floor plan of two-bedroom Duplex with large back porch.



The living room of a Duplex lends itself to tasteful arrangement.

capehart

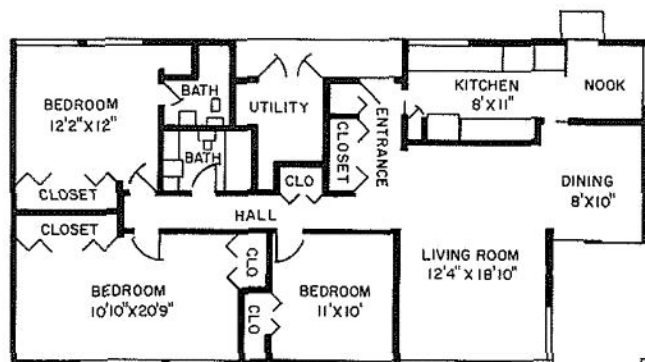
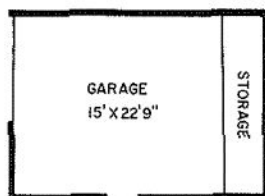


Individual styling of Capehart houses adds interest to China Lake's residential area.

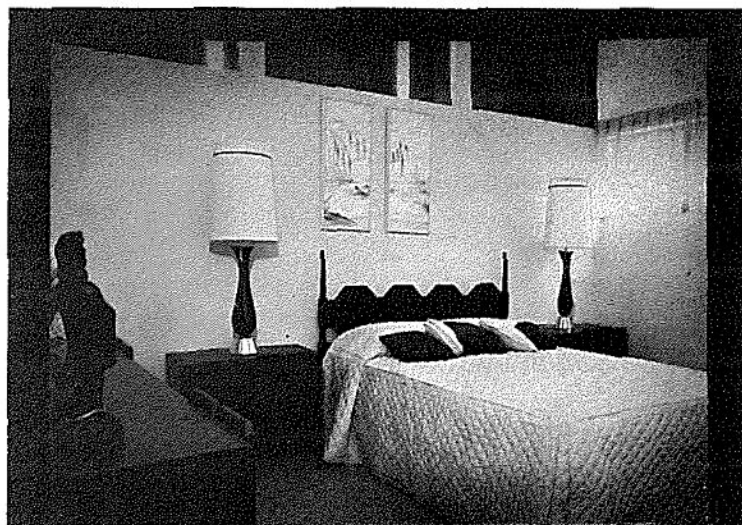
For GS-9 Junior Professionals having four or five family members, there are three-bedroom Capehart houses. Spacious accommodations for families of six or more members are found in four-bedroom Capehart houses for all Junior Professionals. These homes, the newest on the Station, are very modern in design, with large windows (living-room draperies furnished), sliding glass doors opening on a patio, 1 3/4 baths, and space and hookups for washers and dryers. The single garage with each unit has a built-in storage cabinet.

Rent for these homes ranges from \$114.30 to \$129.90.

housing



One of several floor plans for a three-bedroom Capehart home.



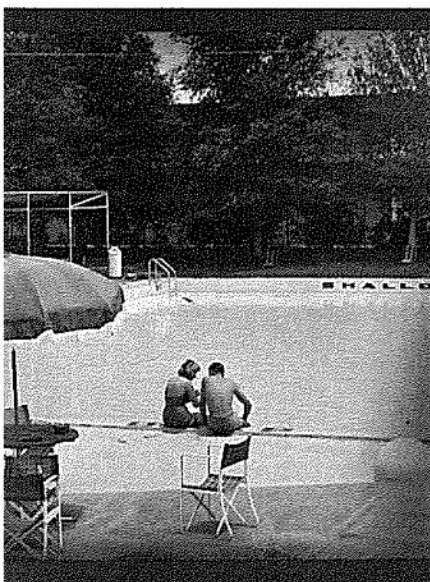
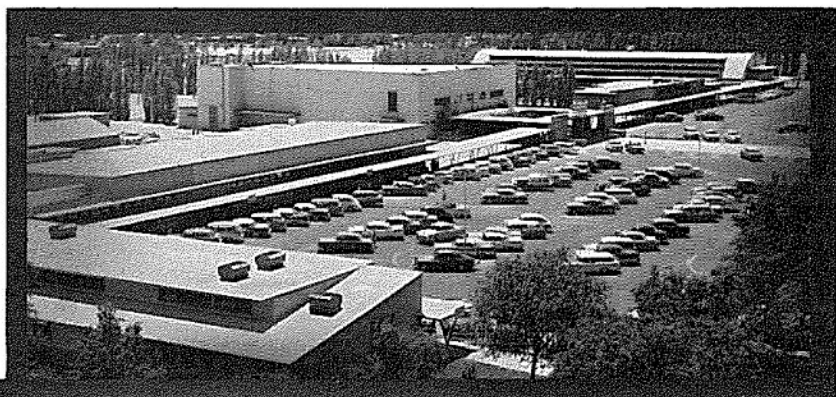
Large bedrooms in the Capeharts are enhanced by window placement.



Good planning has made the Capehart interiors adaptable to many styles and arrangements of furniture.

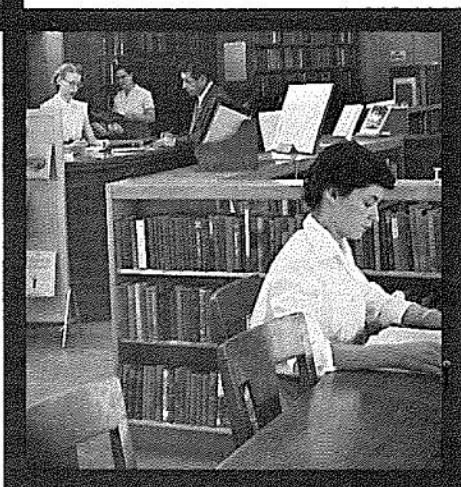
china lake community

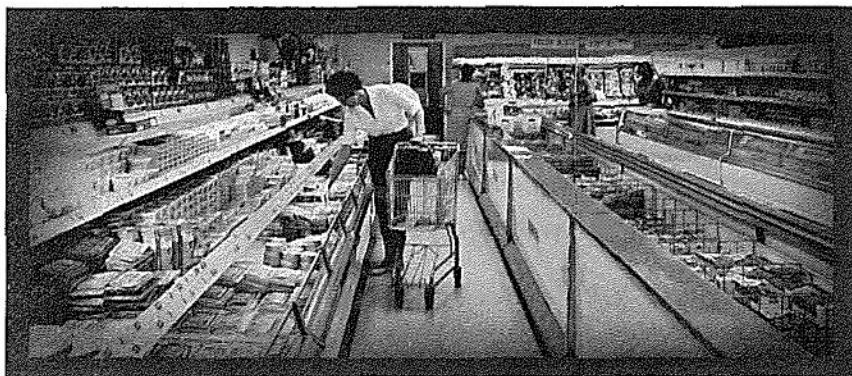
Bennington Plaza, the
shopping and recreation center
of China Lake.



One of four China Lake
swimming pools.

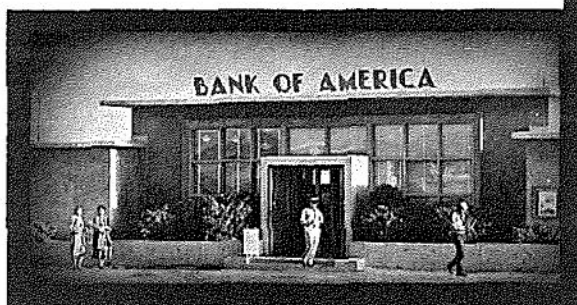
The library, serving all ages
and interests.





Well stocked commissary store.

The Community Center welcomes Station residents for community activities, group meetings, and recreation.



Convenient banking service.

You will feel at home in the China Lake community. Most of its citizens are young people with interests similar to yours. You will find the intellectual and cultural atmosphere similar to that of a college town.

In the modern Bennington Plaza shopping center, you will find basic community services such as those offered by a supermarket-type commissary store, Navy Exchange, bank, post office, barber shop, beauty shop, laundry, and dry cleaners. Here, too, for your convenience and leisure-time enjoyment are located the Station library, theater, swimming pool, tennis courts, and gym. The Community Center and Station Restaurant are nearby.

As a Junior Professional, you are eligible for membership in the Commissioned Officers' Mess (Open), which has excellent dining facilities as well as a swimming pool.

For golf enthusiasts, a nine-hole course is available and an additional nine holes are being constructed to complete an eighteen-hole course.

neighboring communities

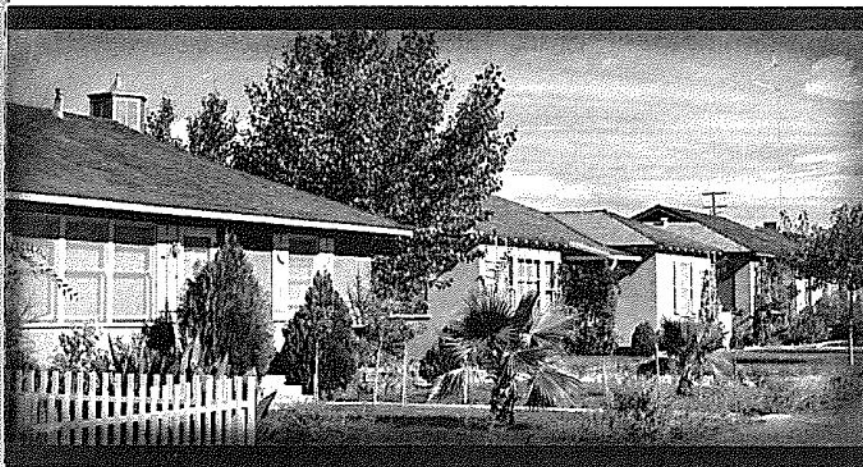


Shops and services of all kinds are available in the thriving community of Ridgecrest, adjacent to the Station.

Adjacent to China Lake is Ridgecrest, a rapidly growing community of about 5,000 persons. Here, many NOTS employees rent or own homes in several newly developed residential areas. Available also in Ridgecrest are shops and services of all kinds.

Some NOTS employees make their homes in Inyokern, a small community located approximately 10 miles from the Station.

A modern private hospital in Ridgecrest is open to all residents of the area.



Many NOTS employees enjoy living in homes such as these in Ridgecrest.



An attractive home in Inyokern.

living at NOTS

