

Station Servicemen To Give Stage Show

An all-servicemen's show, "This Is the NOTS," will be presented at the China Lake Community Center for five consecutive days beginning Monday, Sept. 20. Sponsored by the Enlisted Men's Club, the production revolves around a plot satirizing the serviceman's duties at China Lake.

A number of different scenes are incorporated into the show, giving a glimpse of an inspection at the Marine Barracks, and activities at the brig, Commissary Store, EM Club and the mess hall. The show also features a love song using the security sign at the Main Gate as a theme.

Service personnel who are taking part in the presentation are:

Pfc's Frank Brown and James G. Kennedy, LTJG Donna E. Haney, Homer Dremann, PH1, David Shaw, AB1, Charles E. Thompson, AM1, Raymond Spornauer, SK3, Larry Hatfield, FT3, David and Paul Hoffman and Emmett Osborn, seamen, Bob LeFeuvre, HN, Earl Browning and W. H. Garst, SKSN, John Gomez, SKSA and Eugene Williams, SA.

Tickets, priced at 50 cents per person are available from any member of the cast. Proceeds will go to the enlisted men's recreation fund.

Paint Now Available For Station Tenants

Green paint is now available to Station residents in limited quantities. Applications for paint are being handled by the improvement section of the housing office.

Paint may be obtained by stating the number of square feet of surface to be covered.



Starting Times: 6 and 8 p.m. daily.
Kiddies' Matinee (Special Movies):
1 p.m. Saturday
Matinee: 1 p.m. Sunday

TODAY SEPT. 3
"A BULLET IS WAITING" (82 Min.)
Jean Simmons, Rory Calhoun
Shorts: "Birth of a Band" (15 Min.)

SAT. SEPT. 4
"JESSE JAMES vs. THE DALTONS" (67 Min.)
Brett King, Barbara Lawrence
Shorts: "Woody and the Giant Killer" (7 Min.)
"Armed Forces Screen Report" (17 Min.)

SUN.-MON. SEPT. 5-6
"SABRINA" (113 Min.)
Humphrey Bogart, Audrey Hepburn
William Holden

TUES.-WED. SEPT. 7-8
"NAKED ALIBI" (84 Min.)
Sterling Hayden, Gloria Graham
Shorts: "Who's Who In the Zoo" (20 Min.)

THURS.-FRI. SEPT. 9-10
"GAMBLER FROM NATCHEZ" (89 Min.)
Dale Robertson, Debra Paget
Shorts: "Solid Ivory" (7 Min.)
"Armed Forces Screen Report" (17 Min.)



FOUR GOBS IN A ROD, a pantomime act about four luckless sailors who buy an old car to take them on liberty, is rehearsed by Larry Hatfield, FT3, left, Homer Dremann, PH1, the not too bright driver, David Shaw, AB1, right, and Charles E. Thompson in preparation for the all-servicemen show. After a bout with a traffic officer, the quartet goes into a song routine bemoaning their troubles.

Local Navy Man Competes in District Talent Competition

John Gomez, SKSA, assigned to duty at the Commissary Store, represented the Station at the 11th Naval District talent contest held last Saturday night at the Armed Services YMCA in San Diego.

There were 50 entrants from throughout the district competing for the honor of appearing on the Ed Sullivan "Toast of the Town" television show in New York City.

Gomez, a tenor vocalist, placed second among the singing contestants with a total of 195 out of a possible 250 points, but the top honors went to a jazz combo from Naval Air Station at San Diego.

Gomez, who majored in singing for two years at San Jose State College before entering the Navy, sang "I Love Life," and "Trade Winds." He came to China Lake five months ago from the Storekeeper School at San Diego.

Polio Fund Drive To End Sept. 10

Additional miniature iron lung coin containers were received and distributed this week to department representatives to aid in the emergency March of Dimes drive which will continue for one more week at China Lake.

Preliminary reports indicate that very good progress is being made in some departments. Beverly Johnson, of the Rocket Department, turned in the first two coin containers which held contributions totaling \$47.

Coin collectors that have been filled may be turned in any time to LTJG J. D. Ethridge at the Navy Exchange business office, telephone 71329.

Vote Registration Continues at NOTS

Registration of voters will continue through next Thursday at China Lake for the state wide general election to be held Nov. 2.

To be eligible to vote in the State of California, citizens who are not registered must have been a resident of the state for one year; lived in the County of Kern for 90 days, and in the local precinct for 54 days prior to the election.

Persons who have changed their place of residence since the last election also are required to register.

Deputy registrars will be on duty outside the Commissary Store today from 2 to 6 p.m., and also next Tuesday, Wednesday and Thursday from 9:30 to 11:30 a.m., and from 2 to 6 p.m.

Registrars also will be at the China Lake pilot plant cafeteria next Wednesday and Thursday from 11 a.m. to 1 p.m.

A list of the names and addresses of local deputy registrars of voters was published in last week's Rocketeer for the benefit of persons wishing to register at their homes.

PTA To Hold Tea For School Staffs

A tea has been scheduled next Thursday from 4 to 6 p.m. at the China Lake Community Center for the purpose of greeting new school teachers and administrators and welcoming back returning ones.

The event is being planned by the advisory council of the China Lake PTA, and invitations to be present have been extended to top Station officials and local school board members.

Past presidents of the China Lake PTA will serve.

Boom Town Days To Be Revived In Rand District

Boom town days reminiscent of the turn of the century will be revived in Randsburg over the Labor Day weekend when Rand Mining District organizations will join in sponsoring the annual Old Time Mining Celebration.

Tours of famous gold and silver mines in the area, some of which are still active today, will be featured, along with rock drilling and gold panning contests, gem and mineral displays, dances and a melodrama presentation.

Nearly \$400 in cash will be distributed among the winners of the rock drilling contest.

Proceeds from the three-day affair, which starts tomorrow and continues through Monday (Labor Day), will be used to help finance various youth programs in the Rand Mining District for the coming year.

Pete Osdick, an old timer for whom the town of Osdick (now Red Mountain) was named, will be the official greeter for the annual celebration. Many of the other old prospectors who remember Randsburg in its heyday around 1897 when the discovery of gold swelled its population to around 10,000 also will be present to exchange reminiscences about "the good old days."

A souvenir program filled with pictures and articles about the Rand Mining District of the early 1900's will be available for sale during the three-day celebration to acquaint visitors with the area's historic past.

Refreshments and novelties also will be sold by various Rand Mining District organizations at gayly decorated booths to add to the carnival-like atmosphere of the annual program.

733 Sign Pledges, Crusade To Continue

Safety officials are continuing to enlist drivers in the Station portion of the Kern County safety crusade. More than 733 pledges have been signed to date and as soon as more stickers are received from Bakersfield, they will be given out.

In signing the pledge and affixing the sticker to the rear bumper of his automobile, a driver promises to drive with the utmost consideration for human life and to observe all highway safe driving practices.

Public Works Dance Scheduled Tonight

A community dance, sponsored by the Public Works and OinCC Club, will be held tonight at the China Lake Community Center from 9 p.m. until 1 a.m.

Pug Pilcher's orchestra will provide the music for dancing. Admission is free to club members and tickets priced at \$1 per couple will be available at the door for non-members.

THE WEATHER

Partly cloudy over the weekend with showers in the mountains. Surface winds light, increasing to 20 to 25 knots in the afternoon. Maximum temperature 96. Minimum temperature 86.

VOL. X, NO. 35

U.S. NAVAL ORDNANCE TEST STATION, CHINA LAKE, CALIF.

TEMPERATURES (Housing Area)		Max.	Min.
Aug. 26	87	58
Aug. 27	86	61
Aug. 28	94	67
Aug. 29	104	62
Aug. 30	105	62
Aug. 31	108	68
Sept. 1	91	77

Local District Formally Accepts Elementary Schools

A resolution accepting the Groves, Richmond and Vieweg Elementary Schools from the U. S. Commissioner of Education was passed at last week's meeting of the China Lake Elementary School District board.

The acceptance followed a final inspection of the school facilities by Edward Kufahl, associate field representative from the U.S. Office of Education in San Francisco, and Walter Stath, from the Federal Housing and Home Finance Agency in Los Angeles.

During his visit here, Mr. Kufahl also reviewed attendance records to certify the amount of funds to be provided under Public Law 874, which is based on average daily attendance, and also checked over applications for additional school buildings at China Lake.

In other business conducted by the school board, two new teachers and several non-teaching employes were hired for the coming year.

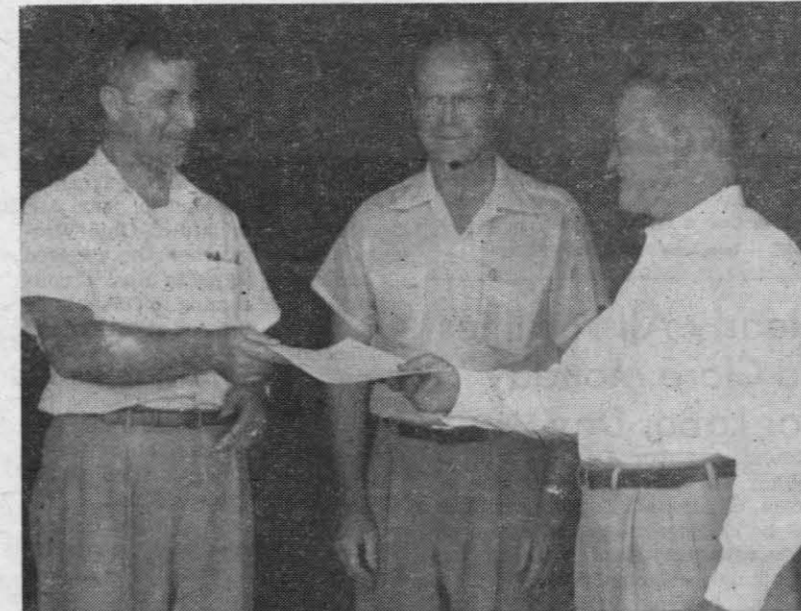
The teachers are Lucretia L. Becker, seventh and eighth grade science teacher, and Virginia K. Johnson, speech instructor.

The class schedule for grades kindergarten through eighth was adopted for the next school year, which starts Sept. 7. It calls for half-day kindergarten sessions, from 8:30 to 11:30 a.m. and 12:30 to 3:30 p.m.; grades one and two will be in session from 8:30 to 11:25 a.m. and from 12:35 to 1:30 p.m.; third grade pupils will attend school from 8:30 to 11:25 a.m. and from 12:35 to 2:30 p.m.; fourth, fifth and sixth graders from 8:30 to 11:25 a.m. and from 12:35 to 3:15 p.m., and seventh and eighth graders from 8:30 to 11:25 a.m. and from 12:30 to 3:25 p.m.

Safety Message To Be Distributed

Printed copies of a Labor Day traffic safety message from the Department of the Navy, Office of Industrial Relations, in Washington, D.C., will be distributed to motorists leaving the Station this afternoon as a reminder to exercise special care while driving on holiday-crowded highways.

The message, which is in the form of a poem, together with a safety cartoon will be handed out at the Main Gate at China Lake, and also will be distributed to Pasadena Annex employes.



JOE HAYCOCK, right, president of the China Lake Elementary School District board of trustees, recently received the permit which formally acknowledges the turning over of three local elementary schools to the China Lake district by the U. S. Commissioner of Education. The permit was presented to Mr. Haycock by Edward Kufahl, left, associate field representative from the U.S. Office of Education in San Francisco, while Dr. Earl Murray, superintendent of China Lake schools, looked on.

Attendance Zone Lines Set Up For Station Elementary Schools

Elementary school district zoning lines, and transportation service that will be provided by the schools during the coming year were outlined this week by local school officials.

Parents are urged to pay special attention to the new attendance zone lines for pupils in grades kindergarten through six since the addition of the Wherry tract to the local school district and widespread movement of families on the Station has forced changes in zone lines at all grade levels.

School bus transportation for the coming semester will be provided for kindergarten, seventh and eighth graders from Wherry housing, and seventh and eighth grade students from the Prefab area.

The elementary bus schedule will be as follows: Two stops will be made in the Wherry area—on Nadeau at Robalo and on Dorado at Sandora. The bus for morning kindergarten children will leave Nadeau and Robalo at 8:10 and arrive at Burroughs School at 8:25 a.m. On the return trip, the bus will leave Burroughs School at 11:35 a.m. and will arrive in the Wherry area at approximately 11:50 a.m.

The afternoon kindergarten bus will leave Nadeau and Robalo at 12:10 p.m. and will arrive at Burroughs at

Record Enrollment Expected Tuesday At Local Schools

An estimated 2200 students, the largest enrollment in the history of the China Lake school system, will return to their studies when school doors swing open wide at 8:30 a.m. Tuesday to mark the start of another school year.

Dr. Earl Murray, Burroughs High School principal, expects a total of 610 high school students, about 60 more than last year at this time, and plans are being made to accommodate slightly more than 1600 pupils at the four Station elementary schools. This latter figure is an increase of nearly 100 over the 1953 enrollment.

On hand to greet the students will be a high school faculty of 30 teachers, in addition to Dr. Murray, while 54 classroom teachers and nine special instructors will handle the teaching chores at the local elementary schools.

Harold Pierce, assistant superintendent of China Lake schools, will head the elementary school staffs, assisted by the following school principals: Carl Barker, at Groves Street School; Leo M. Jacobsen, at Richmond School; Sylvia Tillitt, at Vieweg School, and Vincent Wall, seventh and eighth grade principal.

Facilities are in good shape for the opening of school, officials re-

Employees Advised To Go Slow in Rejecting Insurance

Employees were urged this week by accounting personnel to consider all the facts before turning down the federal employes group life insurance program now available to them.

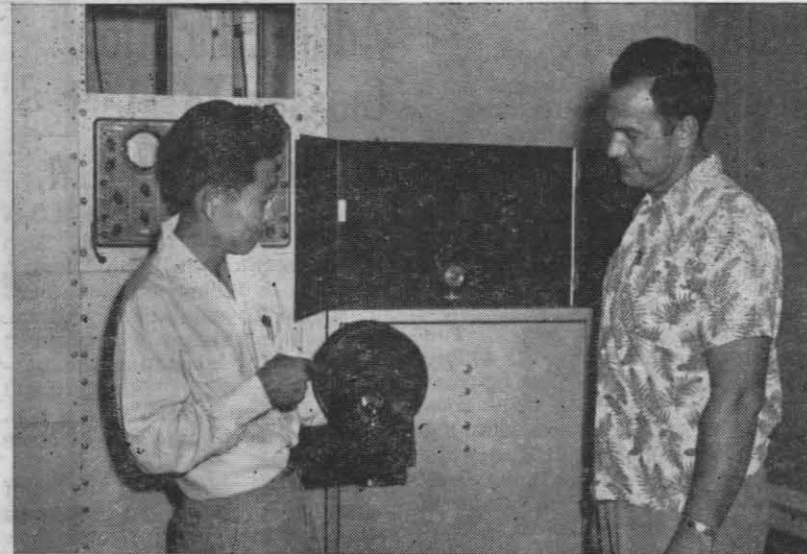
Additional pertinent information has been received regarding reinstatement of the insurance once a waiver form has been submitted, and there is still the possibility that more vital information will be forthcoming which employes should consider before they decide to waive coverage.

This week it was learned from a U.S. Civil Service Commission news release that if an employe declines the insurance at this time and later wants to participate, he will have to wait one year and then undergo a medical examination.

Also, when an employe declines to

(Continued on Page Five)

(Continued on Page Five)



ROBERT HAYASHI, holding one of the small models of the moving-film recorders he developed, compares it with the larger type seen in the background mounted and ready for use as part of an instrument panel at Project SNORT. Looking on at right is John Lechner, operations engineer for the track operations branch of Test, and acting SNORT range engineer.

Assessment of Telemetered Data Aided by Moving Film Recorder

Recording of telemetered data from missiles in flight or from tests of ordnance items sent blazing down one of the Station's various high speed tracks, has been greatly aided by the development of a moving-film recorder, models of which are capable of film speeds from 10 inches per second to 100 inches per second.

Such recorders, devised by Robert Hayashi, a mechanical engineer in the Aviation Ordnance Department, provide a film record of telemetering data pulses which are sent out at an average rate of 600 per second from missiles in flight. The duration of each of these pulses must be measured and recorded to make possible a meaningful analysis of the missile's behavior.

In 1951, when the Aviation Ordnance Department decided to use a pulse-width telemetering system and decimal-coded binary timing system for range and missile testing, it became necessary to devise a fixed-speed moving-film recorder for permanent installation on the aircraft ranges.

New Machine Required

Commercial data recorders available for this purpose at that time proved to be too slow, caused scratches that impaired film assessment, and on occasion produced discharges of static electricity that ruined records. In addition they were bulky and difficult to mount.

It was therefore decided to attempt to develop a simple, rugged and easily mountable recorder free from static electricity, which would not scratch film, and which would meet sand and humidity conditions of the desert.

Four types of moving film recorders have since been built. They are the 35mm 100-foot film reel recorder, the 70mm 200-foot film reel record-

er, the 35mm 100 to 400-foot film reel recorder, and the 35mm 100 to 1000-foot film reel recorder.

Simple Construction

The basic components of the machine are a lens, take-up and supply shafts, one sprocket, pulley and spring belts, a housing and motor suitable for the required operation. Guide posts were included in the early models, but on one occasion they were inadvertently left out and it was discovered that they were unnecessary. A friction clutch on the supply shaft was installed to overcome starting and stopping difficulties.

Spring belts and pulleys are used to drive the take-up reel on the moving-film recorders, except in the case of the fast 400-foot and 1000-foot capacity recorders in which gears and clutches are used to drive the roll film when a speed of more than 60 inches per second is desired. The film position is maintained by a very slight amount of tension which can be obtained at the supply reel shaft by inserting a friction plate.

In general, the bigger the film roll and higher the film rate, the greater the required friction. To obtain smooth starting, a capacitor-run motor or a split-phase motor with a reactance in series is used.

Easy To Operate

Simplicity of operation is one of the advantages of the moving-film recorder. As focus and film speed are adjusted and predetermined for each operating station, the only steps necessary to begin operations are to remove the cover plate, place the film, replace the cover plate and start the motor.

More than a dozen of the machines are now in use at Baker-1, Baker-4, SNORT and Charlie ranges, in the Aviation Ordnance De-

REPORTS FROM Technical Departments

Suggestion Awards Presented to Four Station Employees

Beneficial suggestion awards totaling \$95 were presented recently to four Station employees by their respective supervisors.

A \$35 award was made to Jefferson C. Beard, a mathematics aid, Test Department, for his suggestion concerning the modification of calibration range targets. Mr. Beard suggested that the two bolts now in use to hold the target be replaced with a bolt on each corner. This would eliminate a break in the center line and allow easier calibration and assessment of the film. The award was based on intangible benefits.

An improved towing frame for towing disabled vehicles was the basis for a \$25 award which was presented to John A. Baumer, lead-in-garman, truck driver, in the Public Works Department. The new frame is designed to hold the towed vehicle securely to the rear of the truck thus preventing damage to the rear of the truck or the front of the vehicle, and eliminating the heavy cradle which required two men to handle safely. The award was based on an estimated savings of \$267 and intangible benefits.

John C. Williams, a joiner in the Public Works Department, received an award of \$25 for suggesting an improved guard on the joiner machines. Use of the new safety device is expected to eliminate injuries by allowing both hands to be used in holding the wood while it is being machined. Mr. Williams' award was based on an estimated savings of \$455.

A final award of \$10 was made to Irene E. Fetheroff, a storekeeper, Supply and Fiscal Department, for suggesting the use of beneficial suggestion hint forms. She suggested that they be attached to paychecks as an incentive for additional contributions. The award was based on intangible benefits.

partment's mobile telemetering station and at Michelson Laboratory.

A leading camera designer, who does considerable work for the movie industry, stated upon observing the camera in operation that he would have predicted that the job could not be done that simply, if he had been asked.

Mr. Hayashi, who designed the machine from suggestions made by his division head, has been in various divisions of AOD for the past 3½ years, since graduating with a BS degree in mechanical engineering from the University of California at Berkeley.



Donald J. Morrison

Morrison To Leave, Accepts Position At Corona Lab

Donald J. Morrison, head of the technical division of Central Staff, plans to leave today with his family to take up a new position at the research development laboratory of BuOrd at Corona.

He leaves a record of nine years of work at the Station, and will become director of administrative and technical supporting services at Corona.

Arriving here late in 1945, he took over duties of general engineer and scientific staff assistant in the ballistics division of the Research Department. He held this position until 1948, when he became a scientific staff assistant on the Research Department staff, and, after four years joined Central Staff.

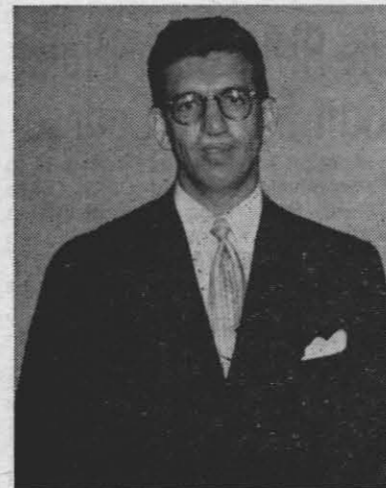
Mr. Morrison is a native of Fayetteville, Ark., and was graduated from the University of Arkansas in 1930 with a degree of Bachelor of Science in electrical engineering.

In 1932 he became an engineer with the Public Service Co., of Northern Illinois in the Chicago area, and two years later, he accepted a job as assistant chief engineer of Montgomery Ward and Co., in Chicago. In 1942, Mr. Morrison became technical assistant to the industrial manager, U.S. Navy, in charge of degaussing operations of the Ninth Naval District.

At China Lake, his staff functions have included supporting Central Staff and the office of the Technical Director in correlation of the technical program planning and reporting.

Mr. and Mrs. Morrison have four children, Donald J. Jr., 20; Brian, 18; Russell, 8; and Laurene, 5. The new family residence will be at 5780 Willard Way, Riverside.

News from Pasadena



ARRANGEMENTS for the annual Pasadena Annex family picnic, scheduled Saturday, Sept. 11, are being made by a committee headed by Jack A. White, left, while Don Steel, at right, is chief ticket seller for the affair.



Campbell Appears On Safety Panel

John L. Campbell, director of safety at the Annex, was a participant in a panel discussion at the 11th Naval District quarterly safety conference, Aug. 26 and 27.

On the afternoon of the first day, the subject of the panel discussion was "If I were the supervisor, this is what I would do to assist the safety engineer in establishing an effective safety program."

Moderator of the discussion was W. J. Gotschall, safety engineer, Naval Supply Depot. Appearing with Mr. Campbell were A. T. Brothers, Industrial Relations Department, U.S. Navy; M. A. Tudor, safety engineer, U.S. Naval Construction Battalion Center, Port Huene; and H. L. Winters, safety engineer, Naval Electronics Laboratory, San Diego.

Assuming the role of supervisor, Mr. Campbell asserted that he would allocate his daily time schedule to permit the accomplishment of a 10-point safety program. The program would include the provision of a safe plant, equipment, and tools; the planning of all operations with careful attention to the safety of workers; analysis of every accident to prevent recurrence; demonstration of safety-mindedness in his own work habits, and full cooperation with the safety officer in obtaining advice and in making reports of accidents.

"By leading my men into thinking safety," said Mr. Campbell, speaking as a supervisor, "I will win their loyal support and cooperation. Assumption of the duties outlined does not indicate that safety is my sole responsibility. It indicates, rather, that safety should be integrated into my other responsibilities in a manner that will permit the accomplishment of all my tasks more effectively."

Officer-in-Charge Has Exciting Week

All manner of things happened all at once this week to CDR R. A. Thompson, USN, Officer in Charge, Pasadena Annex.

First came his orders. He leaves the Station Sept. 20 to report for duty Nov. 1 as commanding officer of the USS Stembel (DD 644). The USS Stembel is a destroyer, now out in the Western Pacific, which will arrive at San Diego before CDR Thompson reports to her.

The Thompson family will move to La Jolla, where they have already taken an apartment at the Park La Jolla Apartments. CDR Thompson plans to take a week's leave, after Sept. 20, and then attend the Navy schools in San Diego to brush up on the latest information on destroyer tactics.

CDR Thompson will be relieved as Officer in Charge, Pasadena Annex, by CDR William T. Groner, USN, who arrived in Pasadena yesterday, and who has been selected for captain.

The second eventful happening in CDR Thompson's life last week was the announcement that he and Mrs. Thompson were to receive a baby daughter by adoption.

Having been informed last fall that they had been approved as adoptive parents by the Children's Home Society of California, the Thompsons received a call on Monday that they could pick up their new daughter on Thursday. The young Miss Thompson, named Suzanne, is a reddish blonde, just six weeks old. The Thompsons also have a son, Bobby, who was born to them six years ago.

SAFETY SLOGAN OF THE WEEK

"Be careful how you drive. Be alive in '55."—Henry P. Hawkes, elevator operator, Public Works Department, Thompson Lab.

Annual Family Picnic Slated for Next Week

Fun for the whole family is guaranteed at the Annex picnic to be staged at Farnsworth Park a week from tomorrow, on Saturday, Sept. 11. The picnic committee, headed by Jack White of Underwater Ordnance and E. J. Jones Jr., of Personnel, is cooking up games and entertainment for Pop, Mom, and all the children.

This is the one time of the year when everybody gets to see for themselves those kids they're always hearing about. The annual picnic is sponsored by the Employes Service Organization as an afternoon and evening when all can relax and enjoy fellow workers and bosses as friends and neighbors.

Hours will be from 2 to 10 p.m. During the afternoon, there will be games for the children, a softball game for the sportsmen and women, horseshoe pitching for the men, and plenty of other activities planned by Doug Wilcox and Bud Kunz of UOD.

Evening Show

In the evening, a show will be produced in the amphitheater, including, it is rumored but not confirmed, an exhibition by dancers. Entertainment chairman is Vernon Hayes of Supply and Fiscal.

Sale of tickets, priced at 50 cents each, is being supervised by Don Steel, propulsion division head, UOD, assisted by Charles Redmond, also of UOD. For tickets, see one of the following at Foothill:

Virginia Banister, Jack Petrof, James Carroll, Cecil Emerson, Vernon Hayes, Henry Alden, Agnes Tittermary, John Davies, Clarence Heath, Fred Parish, Willard Nary, Joseph Galante, Ken Sherman, Bill Staal, Bill Griffith, Ed Davey, Ray Avis, John Zivic, Jack Anderson, and John Fawcett.

At Green Street, Tom Davis and CDR R. M. Tunnell will have tickets. At Thompson Lab, ticket-sellers will be Eleanora Nail, Marguerite Seager, Tom Mico, Max Odekirk, Jim Smith, Ghet Wheeler, Art Bravo, Halley Wolfe, Prentice Bacon, Charles Beaty, Jack Hoyt, Bruce Kelly, Julius Miklowitz, Paul Dergarabedian, Leslie Jones, Bud Kunz, Wally Hicks, Mabry Van Reed, Oscar Terrell, Margery Ross, Glen Carley and Herb Riggins. At Morris Dam, Chuck Bailey and Roy Cornford will have tickets.

Children's Games

Merlin Vance, Engineering Department, will be in charge of children's games. Rose Weinberg, Supply and Fiscal, assures picnicers of exciting door prizes. Bill Shealy, Engineering Department, is the man to call if you need or can offer transportation. Arnold Livingstone of UOD made the posters now on display at the Annex. Chuck Bailey is the committee member stirring up interest for the picnic at Morris Dam.

Families will bring their own supper, and many branches are planning group pot-luck affairs. Plenty of soft drinks and ice cream are as-

sured for everybody by Leo Bullington and Ike Hoover, Public Works, refreshment co-chairmen.

From all indications, this year's Annex picnic is going to be the best ever. Be sure you are there to enjoy it with your family.

Love Visits Lab At San Francisco

R. J. Love, of the Pasadena Annex Central Staff, returned this week from the Interlaboratory Facilities Committee meeting in San Francisco. He is secretary of the committee.

Held at the U.S. Naval Radiological Defense Laboratory, the two-day meeting opened with a welcoming address by Captain R. A. Hinners, USN, director of the laboratory, followed by a luncheon at the Shipyard Commissioned Officers Mess.

The organizational structure was outlined by Dr. P. C. Tompkins, scientific director, who explained that the laboratory came into being following the Bikini tests, when four scientists were brought to San Francisco to investigate methods of decontaminating ships and making them safe for further use.

Participation in recent field operations, including descriptions of test ships, was presented by Dr. E. P. Cooper, associate scientific director, formerly associated with NOTS.

Tours enjoyed by the visitors included inspection of the data reduction facility, and Van de Graf facility, the thermal radiation facility, and an ingenious set-up for keeping whole organs alive, in glass. Also viewed were the ultra-centrifuge and mass spectrometer apparatus, and the chemical technology facilities.

New Policy Set At Coffee Port

The serving of principal hot dishes will be temporarily discontinued at the Foothill coffee port. The demand seems to be largely for hot sandwiches, according to Bill Smith, Jim Carroll, Otto Nass, Ed Carr and Sol Sherman, members of the canteen service board.

Starting Tuesday, on a trial basis, the menu will consist of a hot sandwich selection each day, plus soup, salad, and chili. Foothill patrons are asked to clear away their own dishes when they are finished eating, a practice which has been followed at Thompson Lab.

The Employes Service Organization also would like to remind the customers of both cafeterias that silverware and cups that become lost, strayed, or stolen have to be replaced from the organization's funds, which could be used much more pleasurably for recreation and other activities.



COACH BOB MEEDER is eagerly awaiting the opening of another football season at Burroughs High School. D-day at the local high school will be Monday, when Meeder, assisted by Bob Gilkinson, will begin working with the varsity squad in preparation for the Burros' first encounter against Antelope Valley High School in Lancaster on Sept. 24.

80 Players Expected To Report For Burros Grid Teams Monday

Practice for the 1954 high school football season at China Lake will get under way at 8:30 a.m. Monday. Local gridiron mentors are expecting a turnout of approximately 35 varsity candidates and 45 or 50 aspirants for the Class B team.

Head Coach Bob Meeder and Line Coach Bob Gilkinson of the varsity have scheduled two workouts on Monday—one in the morning and the other at 7 p.m. Both practices will consist primarily of running and "getting rid of summer fat."

Regular varsity practice sessions will be held in the afternoons after school opens on Tuesday.

With seven lettermen returning and several good prospects up from the Class B team, Meeder and Gilkinson are looking forward to a better season than in 1953, when the locals won just three of nine games.

The Burros will field a fairly light line, averaging around 175 lbs., but this is expected to work in well with the new split T offense, which stresses speed and deception.

Matt Weightman will coach the Class B gridders again this season, but until Monday when the first practice is planned, will have no definite information as to the number or previous football experience of his charges.

The schedule for the varsity and Class B seasons is as follows:

Varsity

Sept. 24 — Burroughs vs. Antelope Valley at Lancaster, 8 p.m.; Oct. 2—Burroughs vs. Lone Pine at Lone Pine, 2 p.m.; Oct. 8—Burroughs vs. Desert at Edwards, 8 p.m.; Oct. 15—Burroughs vs. Barstow at China Lake, 8 p.m.; Oct. 22—Burroughs vs. Bishop at China Lake, 8 p.m.; Nov. 5—Burroughs vs. Victor Valley at Victorville, 8 p.m.; Nov. 13—Burroughs vs. Trona at Trona, 2 p.m.; Nov. 20—Burroughs vs. Tehachapi at

China Lake, 2 p.m.

Class B Team

Oct. 1—Burroughs vs. Randsburg at China Lake, 8 p.m.; Oct. 16—Burroughs vs. Barstow at Barstow, 8 p.m.; Oct. 23—Burroughs vs. East Bakersfield Reserves at China Lake, 7 p.m.; Oct. 23 — Burroughs vs. Randsburg at China Lake, 8 p.m.; Nov. 6—Burroughs vs. Victor Valley at China Lake, 8 p.m.; Nov. 12—Burroughs vs. Trona at Trona, 8 p.m.; Nov. 19—Burroughs vs. Kernville at Kernville, 2 p.m.

Burros Sportraits

Bob Wilson—senior, 155 lb., 5 ft. 7 in.—out most of his sophomore year because of a back injury, he moved into the starting lineup during his junior year as a wingback and tailback in the single wing.

He showed steady improvement in spring practice as a "T" formation quarterback and will probably be the starting quarterback this fall.

Wilson is a very good passer and ball handler and also a fair runner, which will make him dangerous on split "T" optional plays.

Bob Giles—senior, 185 lbs., 6 ft., 1 in.—will be playing his third year of varsity ball. A tackle last year, he is being moved to end this fall because of his weight, height and ability to reach over the defensive backs and snare a pass. Giles plays both offense and defense and is a very good blocker on the line of scrimmage.

Giles' size makes a good target for any passer and may improve the Burros' passing game considerably.



Sportsmen's Group Will Forward Data On Dove Season

The Desert Sportsmen's Association is undertaking to handle the forwarding information to the Department of Fish and Game regarding localities where doves are shot during the current season, which started Wednesday and will continue through Sept. 20. After a break, the dove hunting season will be reopened Oct. 12-23.

Hunters are asked to send the outer half of the right wing of each dove, along with information on where the birds were bagged, to the Department of Fish and Game, 926 J Street, Sacramento. This will be taken care of locally by Bill Davis, 307-B Princeton, of the local sportsmen's group.

By determining the doves' ages from the wings, state fish and game officials will be able to estimate how many birds of this year's hatch are in the season's take.

Tourney Entries Due Wednesday

All entry fees for the second annual Satellite Lake Golf Club 72-hole golf tournament, which will start on Sept. 11, must be paid by Wednesday, to any one of the tournament committee members — Jim Ford, Paul Someson, or Henry Wedaa.

The defending tournament champions are: Championship flight, Jim Ford; first flight, Bill Morgan; second flight, Floyd Rockwell; and third flight, Bobby Brown.

Paul Someson, instructor at the local driving range, states that some of the members of the Satellite Lake club are practicing each night, and that he fully expects to see some new champions this year.

Powder Puff League Leaders Play Tonight

Girl's softball enthusiasts will be given an added treat tonight at 8 when the two top teams in the Powder Puff league tangle at Little League Diamond No. 1.

The Raiders are leading the league with a record of four wins and no losses, while the Devils are in second place with three wins and one loss, having been beaten by the Raiders in their first encounter. League members are predicting that the Devils will overrun the Raiders.

Standings in the Powder Puff league, following Wednesday night's game are as follows: Raiders, Devils, Tigers, Wildcats and Bulldogs. The Wildcats moved out of a tie for the cellar position by trouncing the Bulldogs by a score of 24 to 15.

Jr. Rifle Club Plans Gun Safety Course

Another hunter safety course is to be conducted by the China Lake Junior Rifle Club in conjunction with the Ridgecrest Gun Club on Sept. 11 and 18, starting at 8 p.m.

Instructors for the course will be Lloyd Phillips, Bruce Lindmark, George Padgett and Ottow Schneider.

Some of the points to be covered in the 8-hour course are: nomenclature of firearms; gun safety rules; marksmanship; various types of weapons and ammunition; survival equipment, including compass, snakebite kits; proper ways of crossing fences and hazardous areas, such as blow-downs and rock slides; preservation of the trophy after shooting, and hunting laws and regulations.

An infiltration course will be set up as part of the final examination. This will include surprise targets which may or may not be classed as safe targets. The students will be scored on their ability to judge which targets are safe, and points will be deducted for firing on unsafe objects.

The course is to be held at the Ridgecrest Gun Club range, which may be reached by driving south of Ridgecrest on the dump road and following the signs which mark the way to the range.

BOWLING MEETING SET

A meeting will be held Wednesday, at 7 p.m., at the Enlisted Men's Club, to reorganize the Armed Forces Handicap league for the 1954-55 season. Any teams wishing to enter should have a representative present.

Station League Softball

(All games at Beer Hut Diamond)

Tuesday
GMB vs. China Lake, 6:30 p.m.
Officers vs. NAF, 8:30 p.m.
Wednesday
Apprentices vs. Research Dept., 6:30 p.m.
Marine Barracks vs. GMU 61, 8:30 p.m.
Thursday
Public Works vs. NAF, 6:30 p.m.
GMB vs. GMU 61, 8:30 p.m.
Friday
Officers vs. Research Dept., 6:30 p.m.
Marine Barracks vs. Apprentices, 8:30 p.m.
Scores
NAF 7, China Lake 0; Apprentices 10, Public Works 1.

GIRLS' SOFTBALL

(All games at Little League Diamond No. 1)
Tonight
Devils vs. Raiders, 8 p.m.
Monday
Tigers vs. Bulldogs, 8 p.m.
Wednesday
Raiders vs. Wildcats, 8 p.m.
Friday
Bulldogs vs. Devils, 8 p.m.
Scores
Devils 11, Tigers 0; Wildcats 21, Tigers 3.

Elementary School Attendance Zone Lines Established . . .

(Continued from Page One)

The Burroughs School kindergarten zone takes in the area enclosed by the following line, as well as all Wherry housing kindergartners. The boundary line starts at Entwistle and Lauritsen, goes west to Parsons, northwest to Byrnes (including all Card St. apartments), east to Parsons, north to Halsey, east to Hussey, north to Lauritsen and McIntire (including all residences on McIntire east to Mitscher), south on Mitscher to Nimitz (including all residences on North Richmond Road), south on Richmond to Tyler, west on Tyler to Lauritsen, and north on Lauritsen to the starting point.

The Groves School kindergarten zone is enclosed by the following line: Starting at Lauritsen and Entwistle, go south to Tyler, east to Richmond, south to Yorktown, west to Lauritsen, north to Langley, west to Renshaw, northeast to Independence, northwest to Decatur, west to Knox, north to Forrestal, east to Parsons, north to Entwistle and east to the starting point.

The Vieweg School kindergarten zone includes the area south and west of a line starting at Rowe and Langley, west to Renshaw, north to Independence, northwest to Decatur, and west to Kimball.

First Grade Zones

The Richmond School first grade zone takes in the area north and east of a line starting at McIntire and Lauritsen, south to Hussey, south to Halsey, east to Lauritsen, north to Tyler, east to Richmond, north to Halsey, and east to Blueridge.

The Groves School first grade includes the area enclosed by the following line: Starting at Halsey and Lauritsen, go south to Tyler, east to Richmond, south to Yorktown, west to Lauritsen, north to Langley, west to Renshaw, north to Independence, northwest to Decatur, west to Knox, north to Entwistle, northwest to Byrnes (including all Card St. apartments), east to Parsons, north to Halsey and east to the starting point.

The Vieweg School first grade includes the area south and west of a line starting at Langley and Rowe, west to Renshaw, north to Independence, northwest to Decatur, and west to Kimball. All first graders living in the Wherry project also will attend Vieweg School.

Second Grade Zones

The Richmond School second grade zone will include the area north and east of a line starting at Lauritsen and McIntire, proceeding south to Hussey, south on Hussey to Halsey, east to Lauritsen, south to Tyler, east to Richmond, north to Halsey and east to Blueridge.

The Groves School second grade zone takes in the area enclosed by the following line: Starting at Halsey and Lauritsen, go south to Tyler, east to Richmond, south to Yorktown, west to Lauritsen, south to Langley, west to Hussey, north to Independence, west to Renshaw, north to Hornet, northwest to Forrestal, east to Parsons, northwest (including all Card St. apartments) to Byrnes, east to Parsons, north to

Halsey and east to the starting point.

The Vieweg School second grade zone takes in the area south and west of a line starting at Hussey and Langley, goes north to Independence, west to Renshaw, north to Hornet, northwest to Forrestal, west to Knox, south to Decatur and west to Kimball. All second graders living in Wherry homes also will attend Vieweg School.

Third Grade Zones

The Richmond School third grade zone includes the area north and east of a line starting at McIntire and Lauritsen, south to Hussey, south on Hussey to Halsey, east to Lauritsen, south to Tyler, east to Richmond, north to Halsey and east to Blueridge.

The Groves School third grade zone will include the area enclosed by a line starting at Halsey and Lauritsen, goes south to Tyler, east to Richmond, south to Yorktown, west to Lauritsen, north to Langley, west to Renshaw, north to Independence, northwest to Decatur, west to Knox, north to Forrestal, east to Parsons, northwest (including all Card St. apartments) to Byrnes, east to Parsons, north to Halsey and east to the starting point.

The Vieweg School third grade area includes the territory south and west of a line starting at Rowe and Langley, west to Renshaw, north to Independence, northwest to Decatur and west to Kimball. All third graders living in the Wherry project also will attend the Vieweg School.

Fourth Grade Zones

The Richmond School fourth grade zone includes the area north and east of a line starting at Lauritsen and McIntire, goes south to Hussey, south on Hussey to Halsey, west to Parsons, south to Byrnes, west to Card, southeast (including all Card St. apartments) to Entwistle, east to Lauritsen, south to Groves, east to Richmond, north to Halsey, and east to Blueridge.

The Groves School fourth grades are included in an area enclosed by a line starting at Forrestal and Lauritsen, south to Groves, east to Richmond, south to Yorktown, west to Lauritsen, north to Langley, east to Noble, north to Independence, west to Noble, north to Hornet, west to Renshaw, north to Groves, northwest to Forrestal and east to the starting point.

The Vieweg School fourth grade zone will include the area west and south of a line starting at Lauritsen and Langley, east to Noble, north to Independence, west to Noble, north to Hornet, west to Renshaw, north to Groves, northwest to Forrestal, west to Knox, south to Decatur, and west to Kimball. All fourth graders living in the Wherry tract will also attend Vieweg School.

Fifth Grade Zones

The Richmond School fifth grade zone takes in an area north and east of a line starting at Lauritsen and McIntire, goes south to Hussey, south on Hussey to Halsey, west to Parsons, south to Byrnes, west to Card, southeast (including all Card apartments) to Entwistle, east to Lauritsen, south

to Groves, east to Richmond, north to Halsey and east to Blueridge.

The Groves School fifth grade area is enclosed by the following line: Starting at Lauritsen and Entwistle, go south to Groves, east to Richmond, south to Yorktown, west to Lauritsen, north to Langley, east (including all houses) to Hussey, north to Hornet, west to Renshaw, north to Hancock, northwest to Forrestal, east to Parsons, north to Entwistle, and east to the starting point.

The Vieweg School fifth grade zone is enclosed in an area south and west of a line starting at Hussey and Langley, going north to Hornet, west to Renshaw, north to Hancock, northwest to Forrestal, west to Knox, south to Decatur, and west to Kimball. All fifth graders living in the Wherry project also will attend Vieweg School.

Sixth Grade Zones

The Richmond School sixth grade zone will include an area north and east of a line starting at McIntire and Lauritsen, going south to Hussey, south on Hussey to Halsey, east to Lauritsen, south to Fowler, east to Richmond, north to Halsey, and east to Blueridge.

The Groves School sixth grade area is enclosed by the following line: Starting at Halsey and Lauritsen, go south to Fowler, east to Richmond, south to Yorktown, west to Lauritsen, north to Langley, west to Renshaw, west on Renshaw to Knox, north to Forrestal, east to Parsons, northwest (including all Card St. apartments) to Byrnes, east to Parsons, north to Halsey, and east to the starting point.

The Vieweg School sixth grade zone will include the area south and west of a line starting at Rowe and Langley, west to Renshaw, west on Renshaw to Knox, north to Decatur and west to Kimball. All sixth graders living in the Wherry project also will attend the Vieweg School.

Federal Insurance . . .

(Continued from Page One)

participate he will not be eligible for insurance after he has reached the age of 50 years.

By waiting an additional week or two, until full information is available, before invoking an insurance waiver form, employees will only be out the few dollars for the weekly or biweekly deductions, in contrast to the possibility of being permanently excluded from the insurance program if they waive the insurance immediately and then find it impossible to reinstate it later.

However, for those wishing to waive coverage, waiver forms are available now in department administrative and personnel offices.

In order to avoid any and all deductions for insurance from their paychecks, employees must return the completed waiver forms, with the signatures of two witnesses, no later than 4:30 p.m. today to the time-keeping and payroll branch, Code 2561, at China Lake, or to the accounting branch, Code P2567, at the Pasadena Annex.

Adult Education Classes To Start Tuesday at 7 p.m.

Classes under the Bakersfield College and Burroughs Evening High School program will begin Tuesday, according to Wilbur J. Shortt, head of the adult education program. Persons who have not yet registered may do so by contacting the Burroughs High School office which will be open Tuesday from 7 to 8 p.m. Schedule changes may also be made at that time.

Over-all enrollment in the adult education program has increased this year. Preliminary figures show an increase from 670 to 702 in the college section and an increase from 460 to 641 in the high school division.

Enrollment in the following classes, however, has been too small to justify the classes being given: Automobile mechanisms, auto shop, cooking, chorus, home nursing, German and sheetmetal.

Additional enrollment will be required in the following classes before they can be scheduled: English 40, Mathematics 1, Office Practices 53a, Physics 4b, Psychology 1a, and Reading Improvement 81a.

Students who have had no algebra previously and who wish to include it in their schedule may do so by enrolling in Mathematics A.

A few classroom changes have been necessary due to the elimination of some classes. The classes and their new meeting places are: Electronics, Room 14, Burroughs; and Rug Making, Room 211; Art, Room 211; Textile Painting, Room 205, all in the Training building.

Record Enrollment

(Continued from Page One)

ported. Two new buildings, ready for use for the first time, include an addition to the Burroughs High School home economics department and a life-science laboratory.

There has been a delay in the arrival of equipment for the combination cafeteria-auditorium building at Burroughs High, however, and it will not be in operation until several days after the opening of school.

The cafeterias at the Richmond and Vieweg Elementary Schools will be ready for use on the first day of school. Meal tickets, priced at 30 cents each, will be sold in the principals' offices at the two schools.

A selective menu will be offered high school students, once the cafeteria is in operation, according to Mrs. Gene White, director of local school cafeterias.

A bladed road between Desert Park (the Wherry housing project) and the Vieweg Elementary School will be completed in time for the opening of school on Tuesday, but work still remains to be done on the southward extension of Richmond Road and the sentry shelter and gate to be established there, as well as on another road connecting Desert Park and Richmond Road.